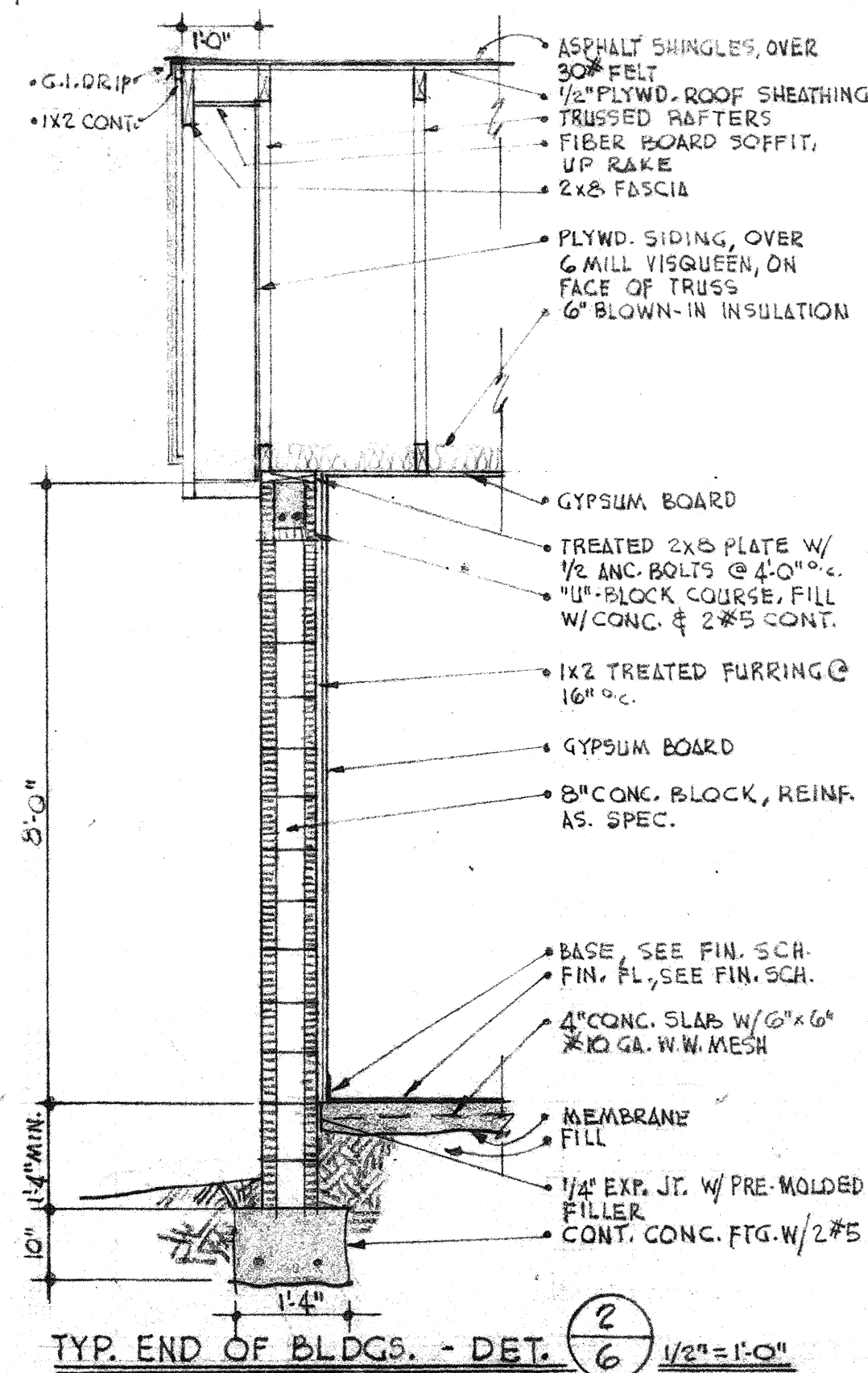
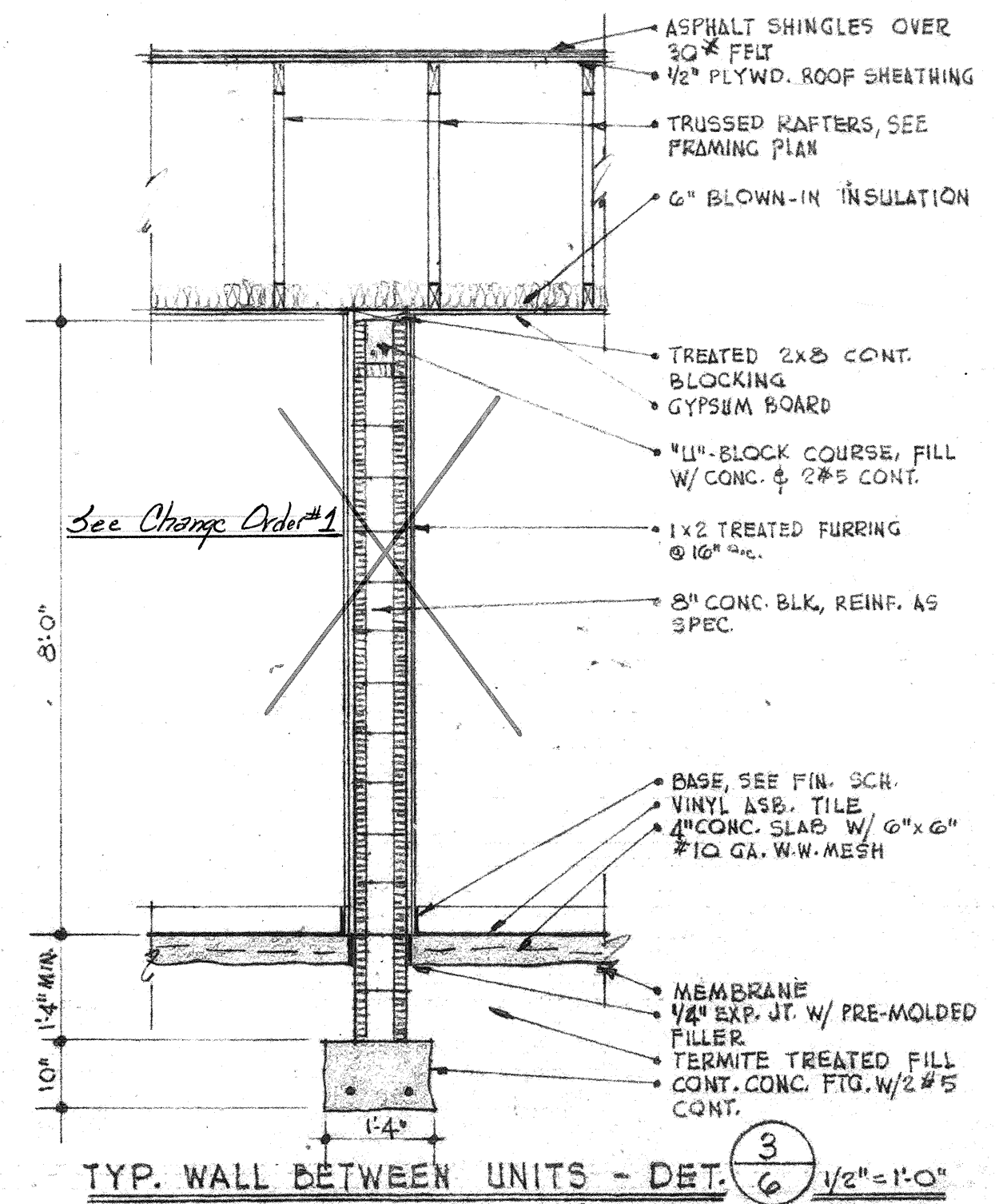


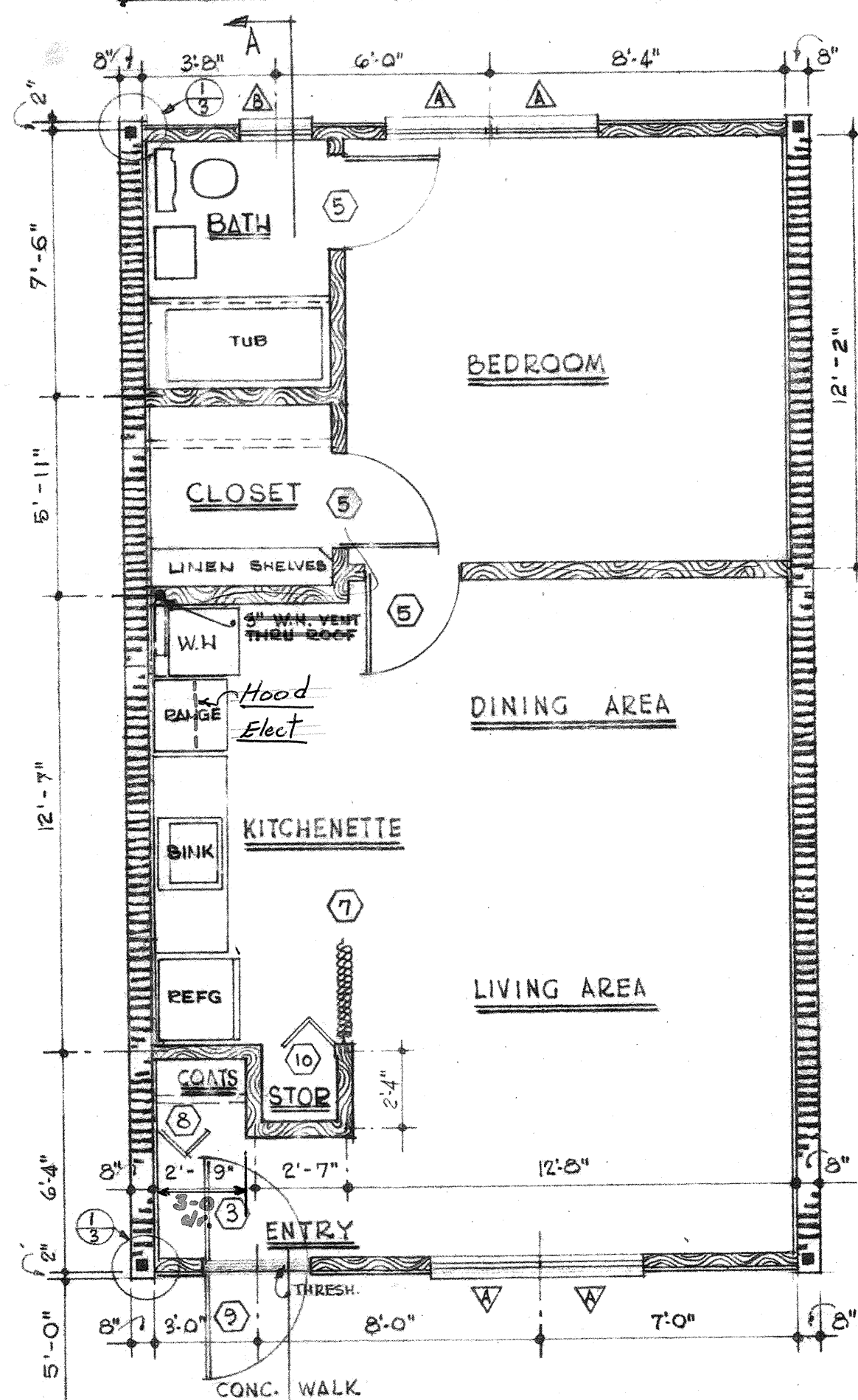
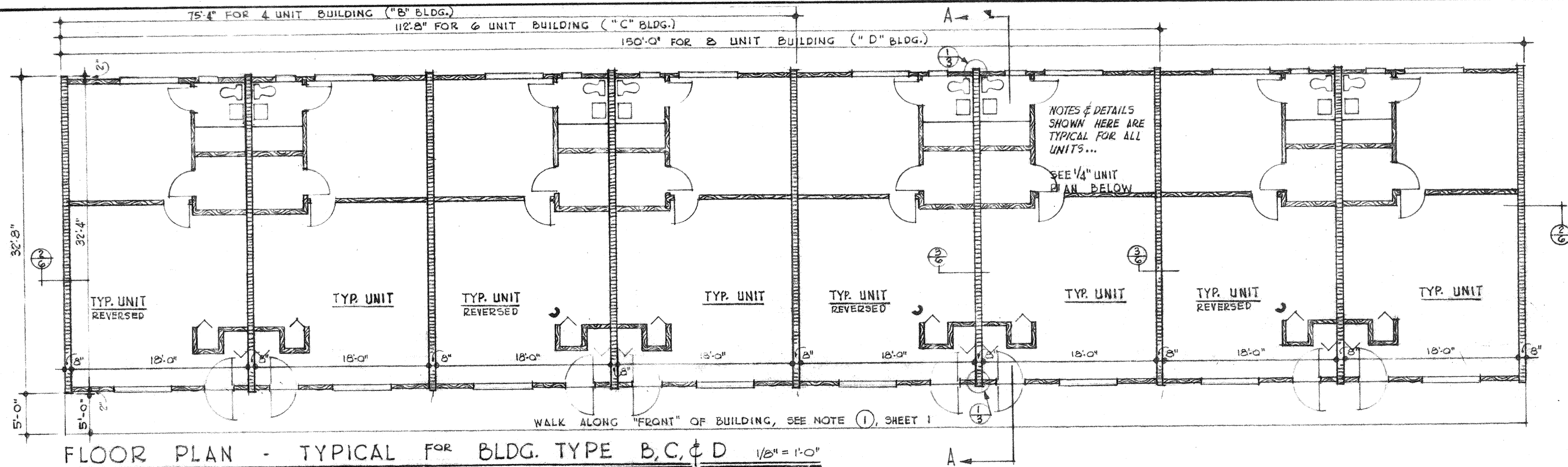
SECT. THRU TYP. UNIT @ A-A
 SCALE 1/2" = 1'-0"



TYP. END OF BLDGS. - DET. 2
 1/2" = 1'-0"



TYP. WALL BETWEEN UNITS - DET. 3
 1/2" = 1'-0"



FLOOR PLAN - TYPICAL APT. UNIT
SCALE 1/4" = 1'-0"

INTERIOR FINISH & COATING SCHEDULE

SPACE	FLOOR	BASE	WALLS	CEILING	WALL COATING	CEILING COATING	DOOR & TRIM COATING	NOTES
ENTRY	VINYL ASB. TILE	VINYL	GYPSUM BOARD	GYPSUM BOARD	FLAT	SPRAY ACOUSTIC	SEMI-GLOSS	① FINISH TOP & BOTTOM OF DOOR SAME AS FACE. ② NO PAINT REQD. @ BI-FOLD OR FOLDING DOOR.
LIVING & DINING	VINYL ASB. TILE	VINYL	GYPSUM BOARD	GYPSUM BOARD	FLAT	SPRAY ACOUSTIC	SEMI-GLOSS	
KITCHENETTE	VINYL ASB. TILE	VINYL	GYPSUM BOARD	GYPSUM BOARD	SEMI-GLOSS	SEMI-GLOSS	SEMI-GLOSS	④ COAT SHELVES W/ SEMI-GLOSS ⑤ 6'-0" CERAMIC TILE WAINSCOT @ TUB
BEDROOM	VINYL ASB. TILE	VINYL	GYPSUM BOARD	GYPSUM BOARD	FLAT	SPRAY ACOUSTIC	SEMI-GLOSS	
BATH	VINYL ASB. TILE	VINYL	GYPSUM BOARD	GYPSUM BOARD	SEMI-GLOSS	SEMI-GLOSS	SEMI-GLOSS	⑥ AT COUNTER, SEMI-GLOSS ON SURFACES NOT COVERED W/ FINISH MATERIAL. ⑦ EXPOSED CONC. BLOCK @ EXTERIOR WALLS.
CLOSETS	VINYL ASB. TILE	VINYL	GYPSUM BOARD	GYPSUM BOARD	FLAT	SPRAY ACOUSTIC	SEMI-GLOSS	
REC. RM. & T.V.	VINYL ASB. TILE	VINYL	GYPSUM BOARD	GYPSUM BOARD	FLAT	SPRAY ACOUSTIC	SEMI-GLOSS	⑧
OFFICE	VINYL ASB. TILE	VINYL	GYPSUM BOARD	GYPSUM BOARD	FLAT	SPRAY ACOUSTIC	SEMI-GLOSS	
LAUNDRY	CONCRETE	VINYL	GYPSUM BOARD	GYPSUM BOARD	SEMI-GLOSS	SEMI-GLOSS	SEMI-GLOSS	⑨
STORAGE	CONCRETE	VINYL	GYPSUM BOARD	GYPSUM BOARD	NONE	NONE	SEMI-GLOSS	
KITCHEN	VINYL ASB. TILE	VINYL	GYPSUM BOARD	GYPSUM BOARD	SEMI-GLOSS	SEMI-GLOSS	SEMI-GLOSS	⑩
MEN & WOMEN	VINYL ASB. TILE	VINYL	GYPSUM BOARD	GYPSUM BOARD	SEMI-GLOSS	SEMI-GLOSS	SEMI-GLOSS	
HALL	VINYL ASB. TILE	VINYL	GYPSUM BOARD	GYPSUM BOARD	FLAT	SPRAY ACOUSTIC	SEMI-GLOSS	

DOOR SCHEDULE

SYMBOL	SIZE	DESCRIPTION	SYMBOL	SIZE	DESCRIPTION
①	PR 3'0" x 7'0" x 1 3/4"	FLUSH WD. SOLID CORE W/ LITE, SEE ELEV.	⑥	3'0" x 6'8" x 1 3/4"	FLUSH WOOD HOLLOW CORE DUTCH-TYPE W/ 1" x 2" WD. SHELF
②	28 x 6'8" x 1 3/4"	FLUSH WD. SOLID CORE	⑦	10'6" x 5'	WOOD FOLDING
③	3'0" x 6'8" x 1 3/4"	FLUSH WD. SOLID CORE	⑧	3'8" x 6'8"	METAL LOUVERED BI-FOLD
④	PR 2'6" x 6'8" x 1 3/4"	FLUSH WD. SOLID CORE	⑨	3'0" x 6'8" x 1 1/8"	WD. STILE & RAIL W/ INSECT SCREEN
⑤	2'8" x 6'8" x 1 3/8"	FLUSH WD. HOLLOW CORE	⑩	1'2" x 6'8"	METAL LOUVERED BI-FOLD

WINDOW SCHEDULE

SYMBOL	SIZE	DESCRIPTION	SYMBOL	SIZE	DESCRIPTION
A	3'-1" x 3'-2 3/8"	23 ALUM. SING. HUNG W/ 1/2 SCREEN	D	3'-1" x 5'-3"	25 ALUM. SING. HUNG W/ 1/2 SCREEN
B	2'-2 1/2" x 2'-2"	1/2 32 ALUM. SING. HUNG W/ 1/2 SCREEN	E	3'-1" x 3'-2 3/8"	23 ALUM. SING. HUNG, NO SCREEN
C	3'-1" x 3'-2 3/8"	23 ALUM. SING. HUNG W/ 1/2 SCREEN			

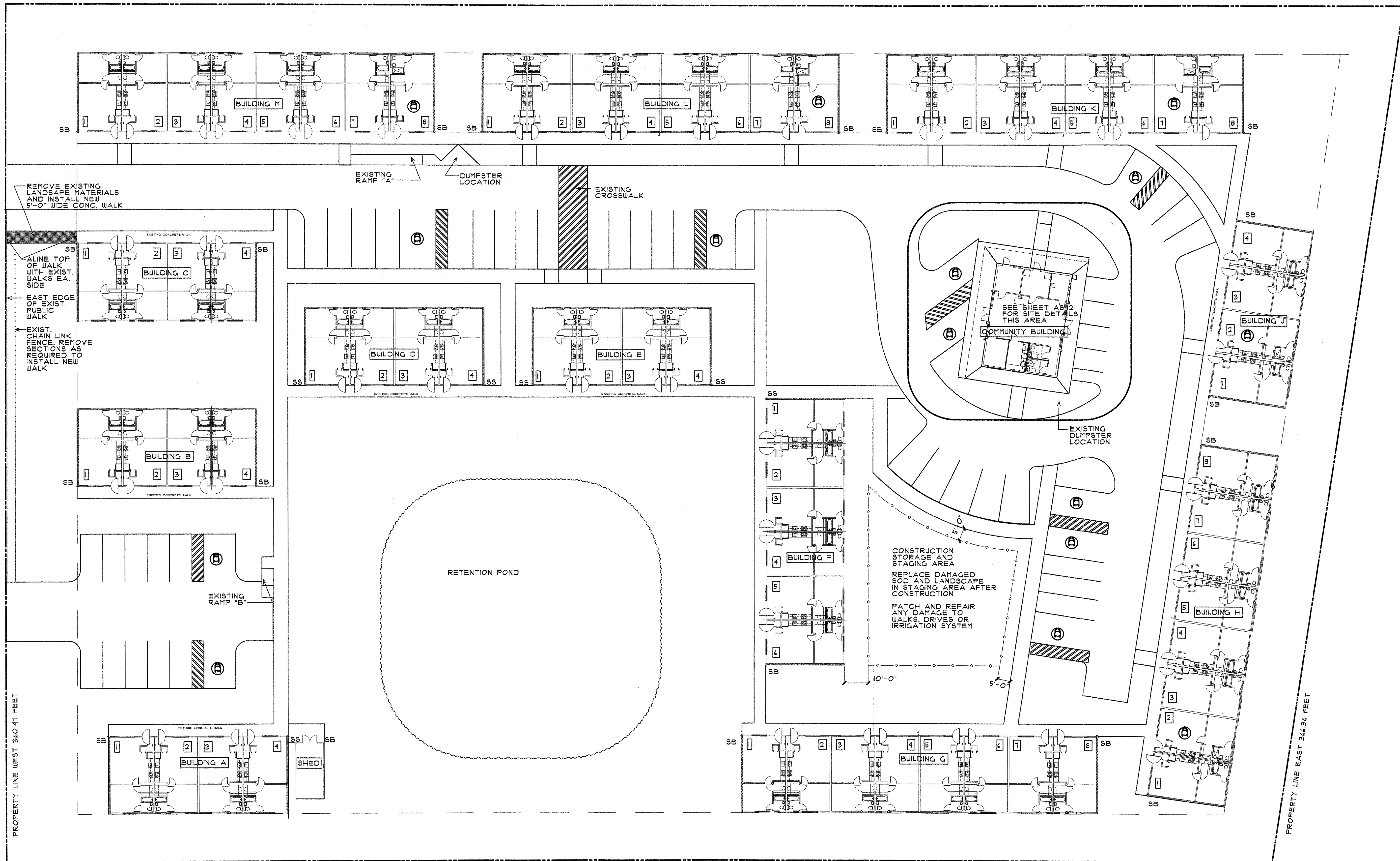
DATE: 6-1-71
FILE: 7110

7' JUSING UNITS FOR THE ELDERLY

Architect Haley, Evans & Associates
P.O. Box 836 G

SHEET
4
OF 21

PROPERTY LINE NORTH 594.38 FEET



PROPERTY LINE SOUTH 531.14 FEET

ARCHITECTURAL SITE PLAN.

BASED ON RECORD DRAWINGS
SB INDICATES DOWNSPOUT TO SPLASH BLOCK
SS INDICATES DOWNSPOUT CONNECTED TO STORM SYSTEM
Ⓐ INDICATES ACCESSIBLE PARKING AND/OR APARTMENTS

EXISTING PARKING
ACCESSIBLE SPACES 10
STANDARD SPACES 39
TOTAL SPACES 49



SCALE 1" = 20'-0"

the
rickman
partnership,
inc

4328 NW 29TH TERRACE
GAINESVILLE, FL 32605
PH. (352) 377-1359
FAX (352) 377-1334
EMAIL: trpinc@gator.net

FLORIDA REG. NO. AA 000324

CONSULTANTS

PHILIP E. RICKMAN
DATE:

RENOVATIONS TO:
SUNSHINE PARK

1901 N.W. 2nd STREET
GAINESVILLE, FLORIDA

FOR THE:
**GAINESVILLE
HOUSING
AUTHORITY**

1900 SOUTHWEST 4th STREET
GAINESVILLE, FLORIDA 32641

REVISIONS

MARK	DATE	DESCRIPTION

SHEET TITLE

SITE PLAN

PROJECT NO. 0902

DATE: 01/18/10

SHEET

AS-01

OF THREE